

Power Splitter/Combiner

EDF0279-D008931

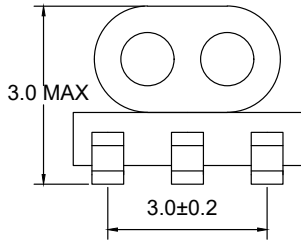
2024-11-13 Rev. 0



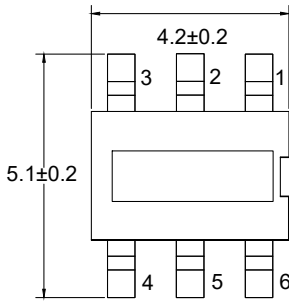
50Ω 2 Way-0° Power Divider

5-1000MHz

Outline Drawing(mm)

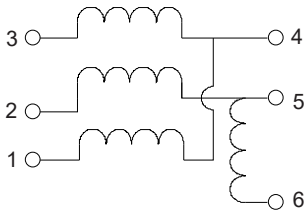


Side View



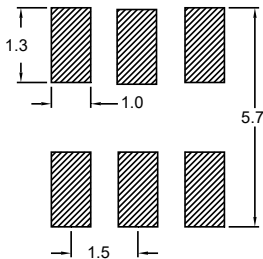
Top View

Electrical structure



Bottom view

Recommended layout(mm)



Pin Connections

IN	3
OUT	4
BR	6
GROUND	1,2
External 50 Ω	5

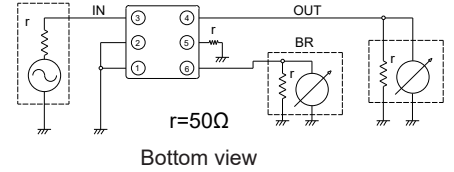
Features

- Input Power: 0.25W Max
- DC Current: 30mA Max
- 260°C Reflow Compatible
- RoHS compliant and lead free
- Operating temperature range: -40°C to +85°C
- Storage temperature range: -55°C to +100°C

Applications

- For Motorola Walkie-talkie.
- For Car Streaming Media Rearview Mirror.
- For Broadband and Wireless Communications.
- For Wireless Microphone & Marine Communications.
- For Ideally Suited LTE, Cellular, UMTS, WiFi, WiMAX.
- For Differential Modulator/demodulator and Active Mixers.

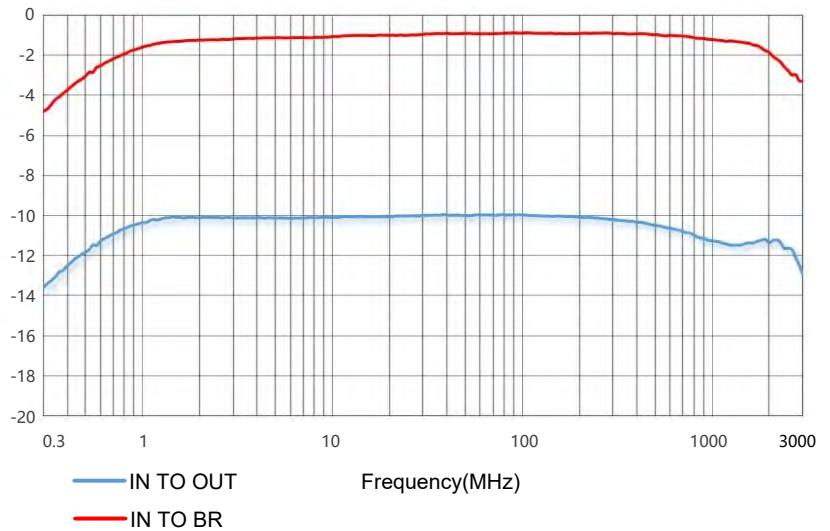
Electrical schematic



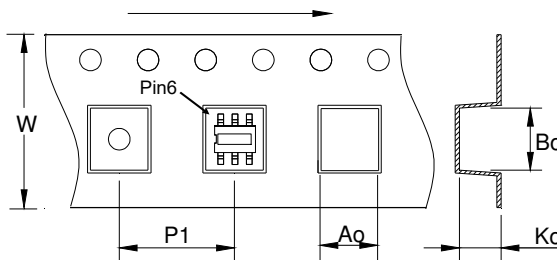
Bottom view

Electrical Specifications: TA=25°C, 0dBm, Z0=50Ω

Item	Subject	Specifications(A)	Specifications(A)	Note	
Insertion Loss	10MHz	2.5dB max	Initial ± 1.5dB	SPEC A is Initial valuc.	
	50MHz	2.5dB max	Initial ± 1.5dB		
	100MHz	2.5dB max	Initial ± 1.5dB		
	IN TO OUT	500MHz	2.5dB max	Initial ± 1.5dB	SPEC B is permissible value or changes after environmental test.
		1000MHz	2.5dB max	Initial ± 2.0dB	
IN TO BR	10MHz	11.0±3.5dB	Initial ± 2.0dB		
	50MHz	11.0±3.5dB	Initial ± 2.0dB		
	100MHz	11.0±3.5dB	Initial ± 2.0dB		
	500MHz	11.0±3.5dB	Initial ± 2.0dB		
	1000MHz	11.0±5.5dB	Initial ± 2.5dB		



Carrier Tape Orientation



Tape & Reel Information

Parameter	Units	Value
Qty per reel	PCS	2000
Reel Size	mm	330
Tape Width	mm	12.00
Pitch	mm	8.00
Ao	mm	4.50
Bo	mm	5.70
Ko	mm	3.60