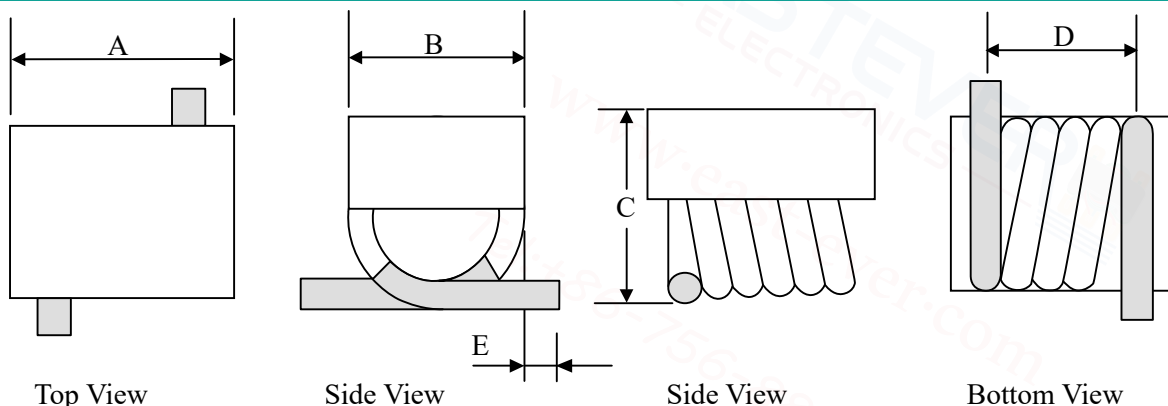


SMD Flat Top Air Core Inductors

Air Core Coil Features

- Air core inductors feature high Q and current handling
- Acrylic top provides a flat surface for pick and place
- Solder coated leads ensure reliable soldering
- Operating temperature range: -40°C to $+125^{\circ}\text{C}$
- Storage temperature range: -55°C to $+145^{\circ}\text{C}$

Air Core Coil Inductor Dimensions & Configurations (Unit In mm)



Top View

Side View

Side View

Bottom View

P/N Type

A

B

C

D

E

SMTAM1006

9.0(max)

4.4 ± 0.3

5.8 ± 0.2

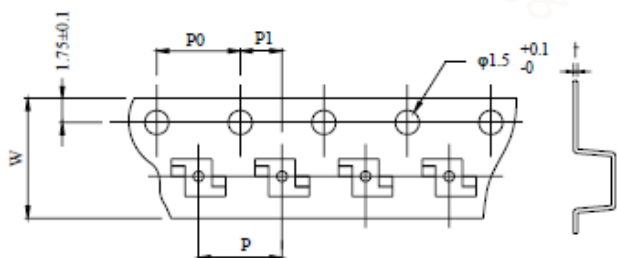
8.0 ± 0.5

1.3 ± 0.4

Specification

Part Number	(A)Max	Inductance (nH)	Q(min)	Test Freq (MHz)	DCR (mΩ)Max	SRF(GHz)(min)
SMTAM1006 - 90NJ	3.5	90	100	50	15	>1.0
SMTAM1006 - 111NJ	3.5	111	100	50	15	>1.0
SMTAM1006 - 130NJ	3.0	130	100	50	20	>0.9
SMTAM1006 - 169NJ	3.0	169	100	50	25	>0.8
SMTAM1006 - 206NJ	3.0	206	100	50	30	>0.7
SMTAM1006 - 222NJ	3.0	222	100	50	35	>0.6
SMTAM1006 - 246NJ	3.0	246	100	50	35	>0.6
SMTAM1006 - 307NJ	3.0	307	100	50	35	>0.5
SMTAM1006 - 380NJ	2.5	380	100	50	50	>0.5
SMTAM1006 - 422NJ	2.5	422	100	50	60	>0.4
SMTAM1006 - 491NJ	2.0	491	100	50	65	>0.4
SMTAM1006 - 538NJ	2.0	538	100	50	90	>0.4

Tape & Reel Information



Parameter	Units	Value
Qty per reel	PCS	500
Reel Size	mm	330
Tape Width	mm	24.00
P	mm	16.00
P0	mm	4.00
P1	mm	8.00