

Features:

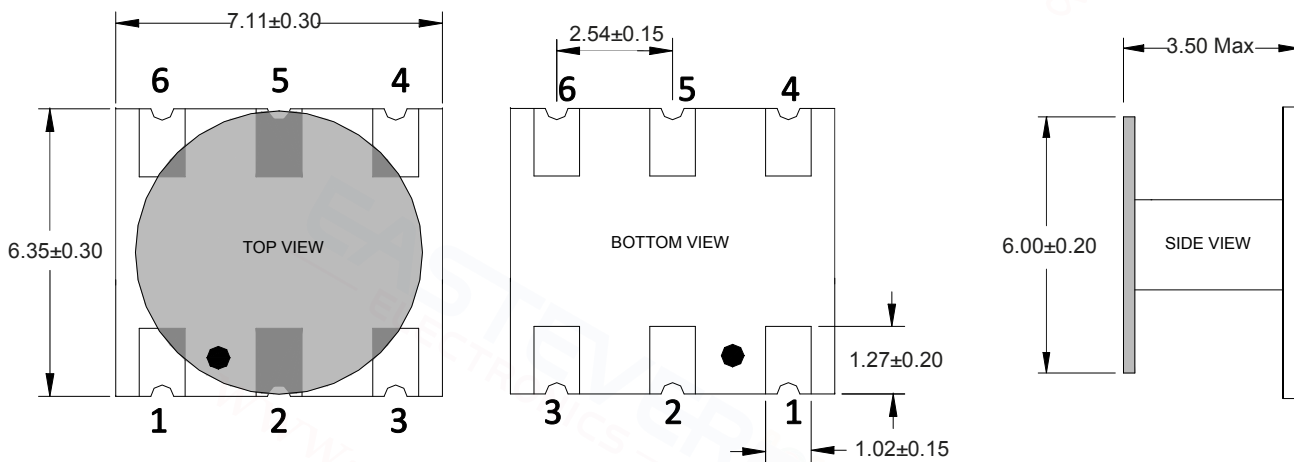
- ◆ DC current: 30mA Max
- ◆ Power Input(as a splitter): 0.50W Max
- ◆ Operating temperature range:-40°C to+85°C
- ◆ Storage temperature range: -55°C to +100°C



Applications:

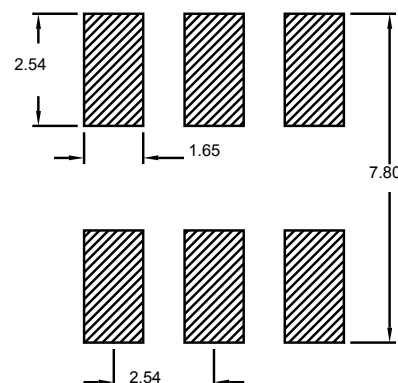
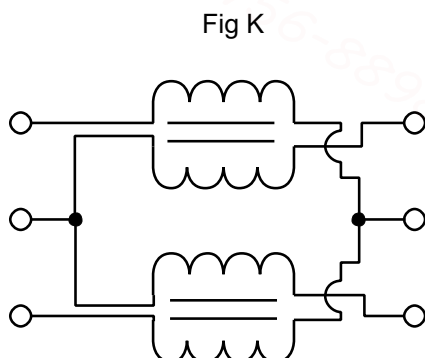
- ◆ For Docsis 3.0 & 3.1 Cable Modem.
- ◆ For Wideband Push-pull Amplifiers.
- ◆ For CATV Amplifiers Module & Set top box.
- ◆ For CATV Optical Receivers and Amplifiers.
- ◆ For VHF/UHF Transmitters and Push-pull Amplifiers.

Dimension Diagram (Unit:±0.20mm) :



Electrical structure:

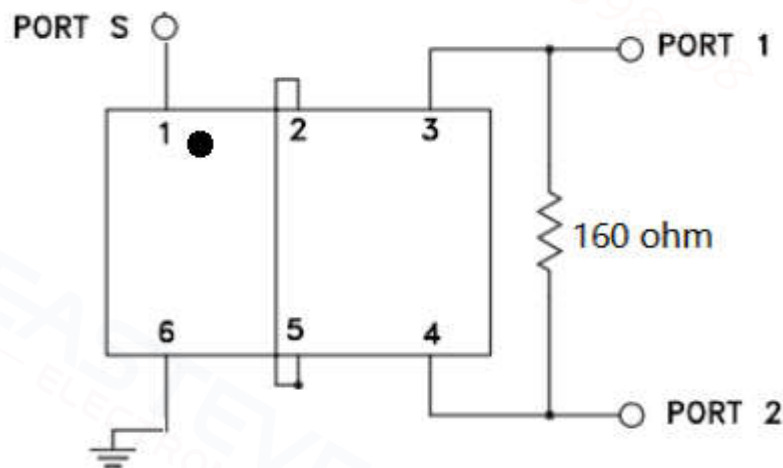
Recommended layout:



Pin configuration:

SUM PORT	1
PORT 1	3
PORT 2	4
GROUND	6
NOT USED	2、5

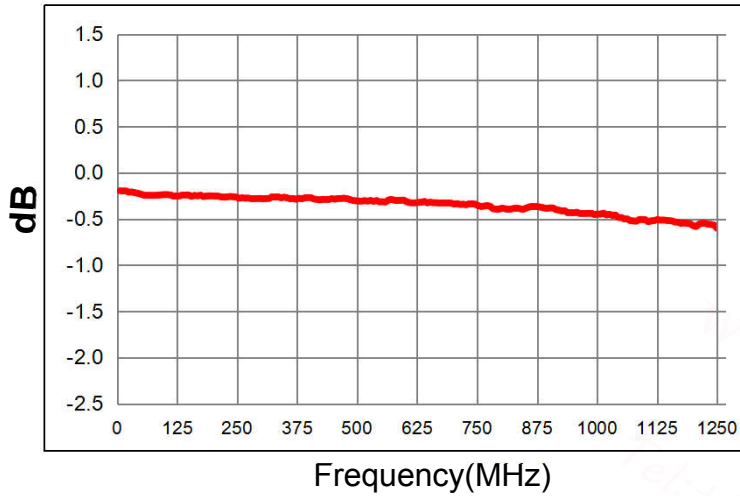
Application circuit :



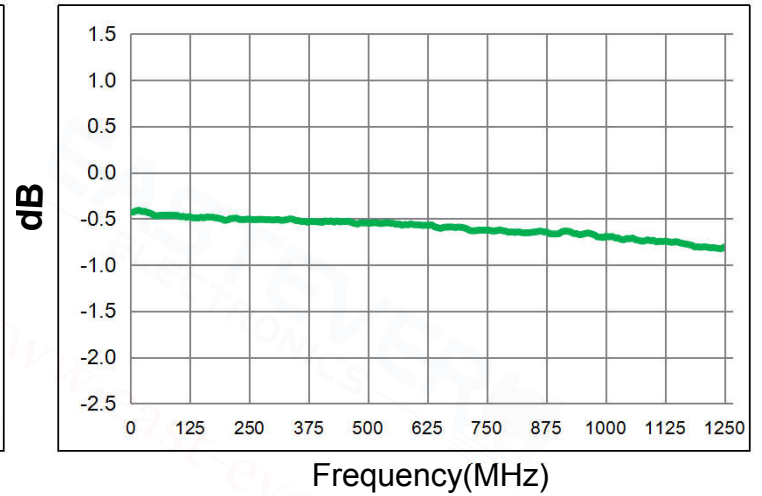
Electrical Specifications: TA=25°C , 0dBm,Z0=75Ω

Parameter	Test Conditions	Units	Min	Typ	Max
Main line Loss(out1)	5-1250MHz	dB	—	0.4	1.2
Main line Loss(out2)	5-1250MHz	dB	—	0.7	1.4
Input Return Loss	5-1250MHz	dB	18.0	32.0	
Output 1 Return Loss	5-1250MHz	dB	14.0	22.0	
Output 2 Return Loss	5-1250MHz	dB	14.0	25.0	
Isolation	5-1250MHz	dB	14.0	30.0	

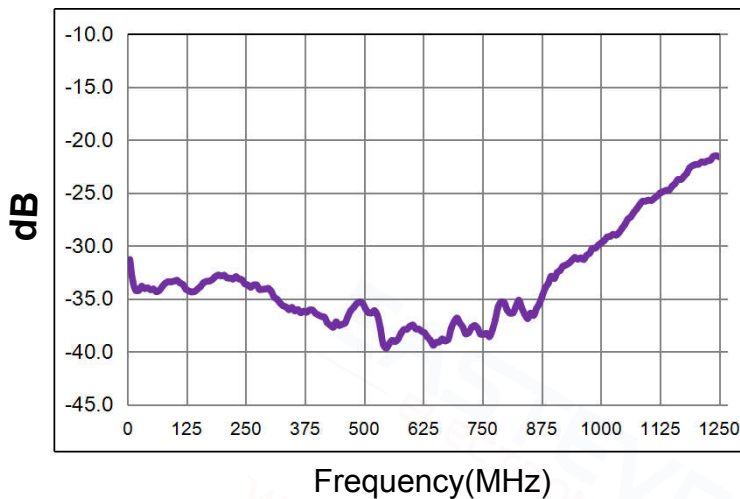
Main line Loss(port1)



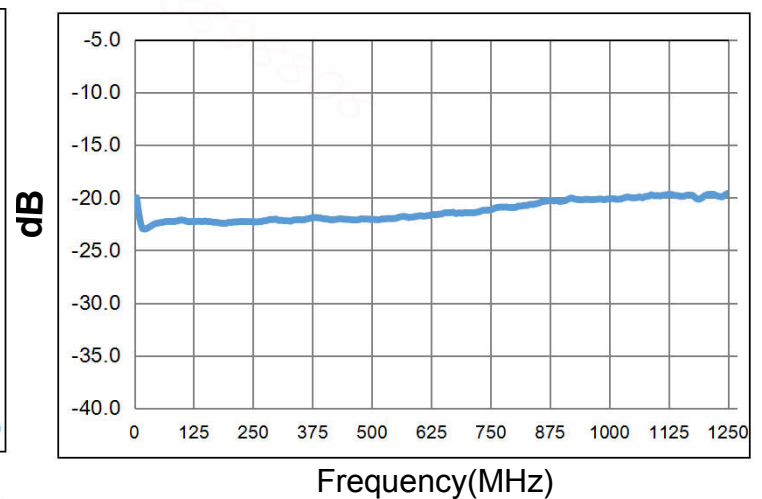
Main line Loss(port2)



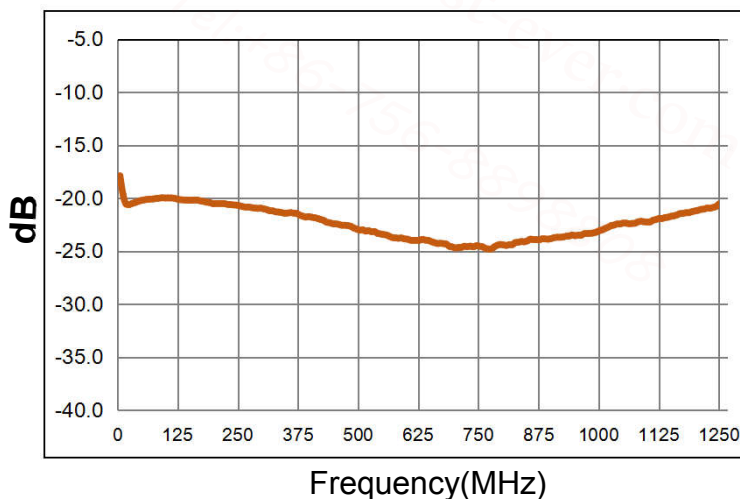
Input Return Loss



Output 1 Return Loss



Output 2 Return Loss



Isolation

